

# Getting Traffic Moving

Delivering an Efficient, Connected Transportation Network | Operated by 



## Elizabeth River Tunnels

For more information about the Project, including the Comprehensive Agreement and other Project documents and to sign up for Project updates, please visit [www.DriveERT.com](http://www.DriveERT.com)

To report an incident or maintenance issue at the Elizabeth River Tunnels, call our 24-hour hotline: **1-855-ERT-ROAD (1-855-378-7623)**

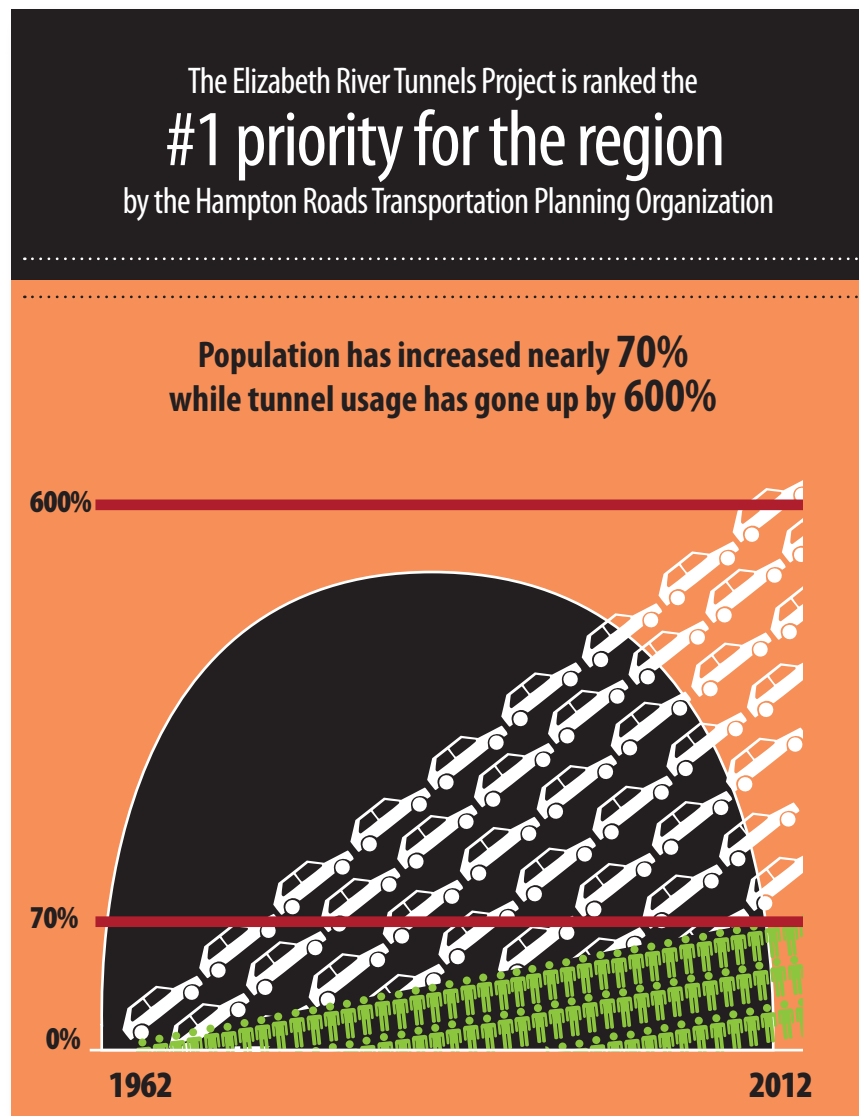
For inquiries about tolls or billing issues related to the Elizabeth River Tunnels Project, contact the ERT Customer Service Center directly at **1-855-ERT-ROAD** or [customerservice@DriveERT.biz](mailto:customerservice@DriveERT.biz)

**Providing a Region-Wide Transportation Solution**

### Critical Need for the Project

The existing Midtown Tunnel is a 50-year-old facility carrying a million vehicles a month. It is the most heavily traveled two-lane road east of the Mississippi and a vital link between Norfolk and Portsmouth. Since the tunnel was built, population has increased nearly 70 percent and tunnel usage has gone up by 600 percent. Additional capacity is greatly needed.

A second tunnel, in addition to the Martin Luther King (MLK) Extension and other improvements, is critical for motorists, the region's economy, the efficient movement of goods and services and the quality of life.



## About the Project

The Elizabeth River Tunnels Project is a public-private partnership of the Virginia Department of Transportation and Elizabeth River Crossings, OpCo LLC. Located in Norfolk and Portsmouth, Virginia, the Project includes:

- A new two-lane tunnel under the Elizabeth River adjacent to the existing Midtown Tunnel
- Significant rehabilitation, fire, life and safety improvements to the existing Midtown and Downtown tunnels
- Extension of the U.S. 58 Martin Luther King Freeway from London Boulevard to Interstate 264 (I-264), with an interchange at High Street, creating an efficient, connected transportation network
- Modifications to the interchange at Brambleton Avenue/Hampton Boulevard in Norfolk
- Complete operations and maintenance responsibilities of the Elizabeth River Tunnels and associated roadways
- An annual subsidy to Hampton Roads Transit to increase bus service between Portsmouth and Norfolk to the highest levels of service, creating a cost-efficient alternative to driving

## The Elizabeth River Tunnels Project will save drivers time, money and frustration:

- Using the MLK Extension, drivers can easily choose between the Downtown and Midtown tunnels—and they'll be better informed of travel speeds via dynamic signs that are tied into the tunnel safety systems.
- Once the new Midtown Tunnel is complete, the average round-trip driver at the Midtown Tunnel will save about 30 minutes a day, saving fuel costs and reducing greenhouse gas emissions.
- Reduction of daily 3+ miles back-ups at the Midtown Tunnel and congestion at the Downtown Tunnel once the additional lanes in the Midtown Tunnel open.
- Increased travel options will provide greater accessibility to jobs, educational facilities, medical services, shopping and recreational activities.
- The Project provides an annual subsidy to Hampton Roads Transit to increase levels of bus and ferry service between Portsmouth and Norfolk, providing a better connected, low-cost alternative to driving in the corridor.
- Eliminating bi-directional traffic in the current Midtown Tunnel will increase capacity for emergency response and evacuation readiness. Police, fire, ambulance/first responders contributed to the design features of the new Midtown Tunnel.

Less idling **reduces** emissions, fuel consumption, and **saves commuters money.**



Hampton Roads drivers will save **\$66.3 million** in fuel costs each year.<sup>1</sup>

That's almost **\$200** in fuel savings annually for each resident of Portsmouth and Norfolk.<sup>2</sup>

That's the equivalent of taking **29,120 cars** off the road each year.<sup>3</sup>

A partner of:  VDOT

<sup>1</sup> Based on 2010 population of Norfolk and Portsmouth of 338,338  
<sup>2</sup> Based on 17 million gallons of fuel at \$3.90 per gallon  
<sup>3</sup> Based on EPA average annual fuel consumption for passenger car of 581 gallons (12,500 miles per year @21.5 MPG fuel economy)